

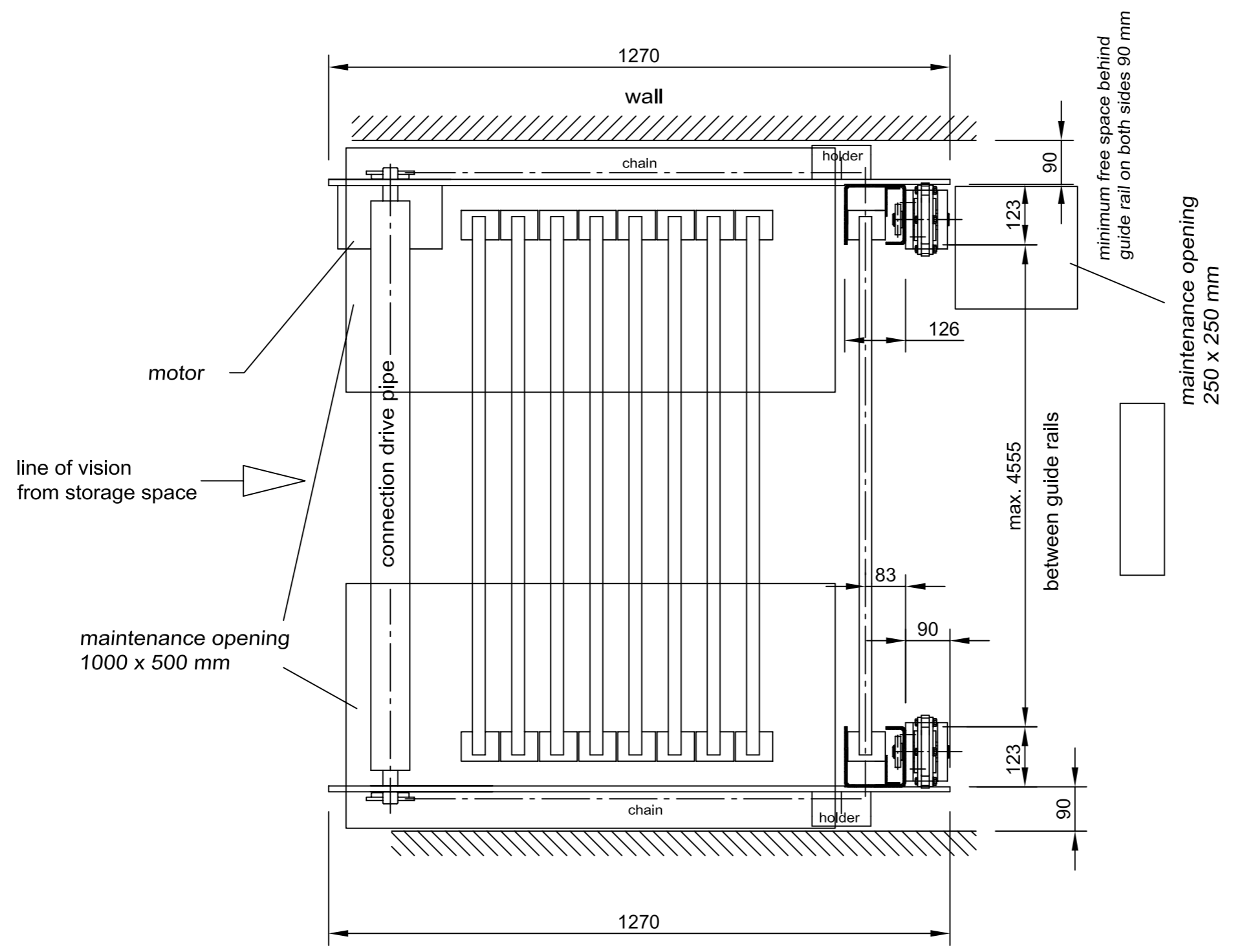
Installation drawing

GG/2-398
Dimensions in mm
Scale 1:10

Weight /m² wall
2 x 8mm glass 2 x 10mm
420 N 530 N

weight of drive train
with railings
app. 1600 N

Motor
400 V (230 V)

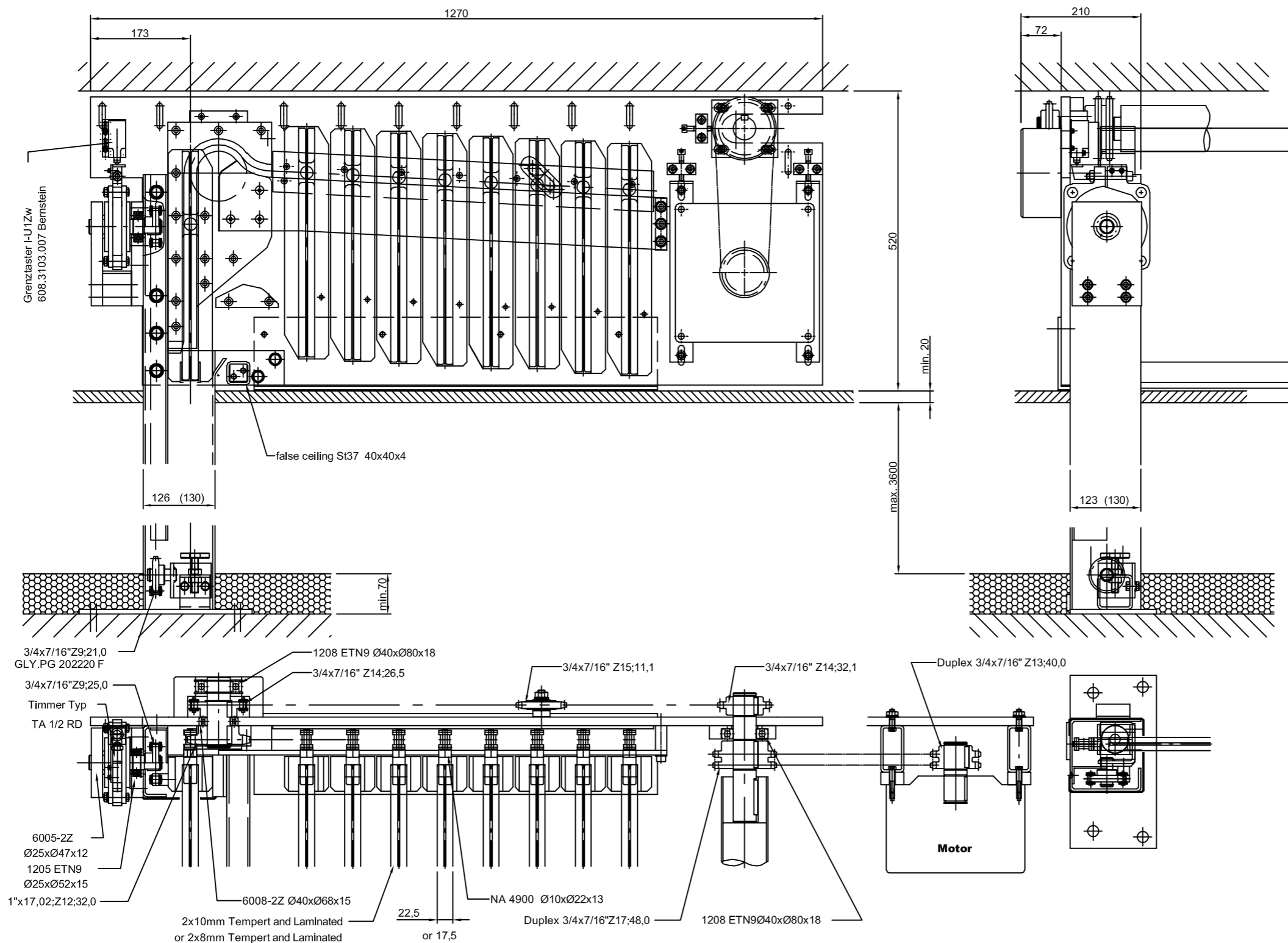


Installation drawing
GG/2-398
Dimensions in mm
Scale 1:10

Weight /m² wall
2 x 8mm glass 2 x 10mm
420 N 530 N

weight of drive train
with railings
app. 1600 N

Motor
400 V (230 V)



Height of individual end cap	= 403 mm
Height of individual glass element	= 399 mm
Gap in closed position between glass	= 4 mm
Gap during opening between glass	= 7 mm
total weight of drive train	= 1800 N
Weight of glass 23,5 mm thick	= 530 N/m ²
Max. height of wall	= 3600 mm
Max. length in between guide rails	= 4740 mm
Max. length behind guide rails	= 5000 mm

Drive train
GG/2-398
Dimensions in mm
Scale 1:8